

**Use:** Modular surface grid (Horizontal or vertical installation).

**Description:** Custom panel; cassette-style panel with folded edges and integrated hooks; screwing not visible; profile 1 1/4" = 32mm / joint 3/4" = 19mm.

Maximum dimensions in aluminum = 24" x 116" c/c of joint. Maximum dimensions in zinc = 14" x 55" c/c of joint.

**Finish options:**

- D-MAX finish: Aluminum, 2.0mm thick, 5754H42 alloy, pre-painted PVDF type Kynar 500 - 70 % finishes such as Duranar XL, 10 colors in stock: Black RAL9005, White RAL9016, Jupiter RAL9006, Rigel-2, Neptune, Charcoal, Ankaa, Saturn, Orion and Virgo.

-Urethane acrylic finish: Aluminum, 2.0mm thick, 3003H14 alloy, unlimited choice of colors from color charts Sico, BM, RAL, Qc.

-Zinc, 1.0mm thick, quartz or anthra finish from VMzinc.



www.PanfabDesignUsa.com  
1-844-433-9446

**Project:**

PZ-600 PANFAB EZ CLIP PANEL

**Title:**

ISOMETRIC VIEW

**Scale:**

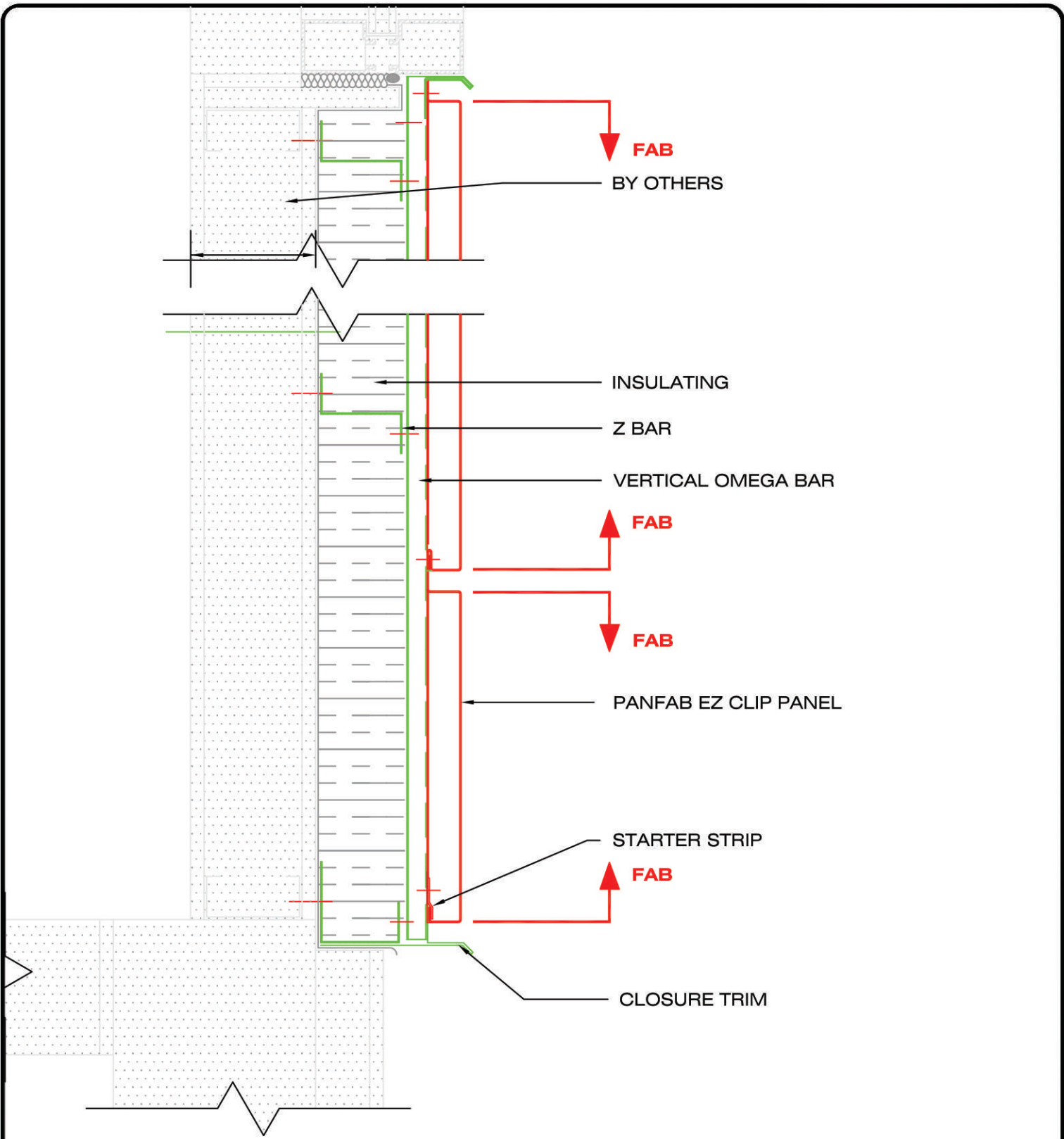
1 : 60

**Date:**

MARCH 2017

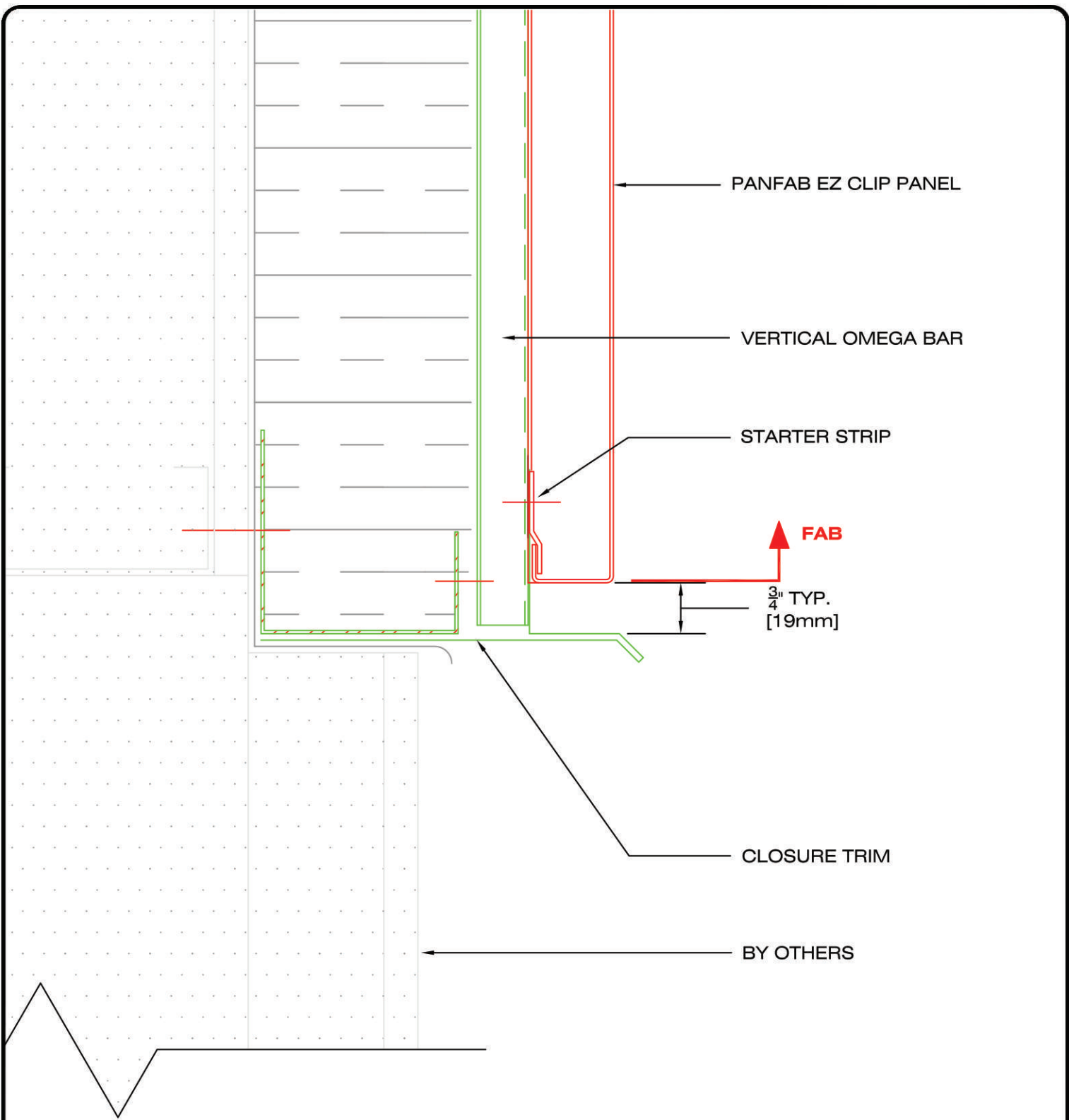
**Page:**

630200



[www.PanfabDesignUsa.com](http://www.PanfabDesignUsa.com)  
 1-844-433-9446

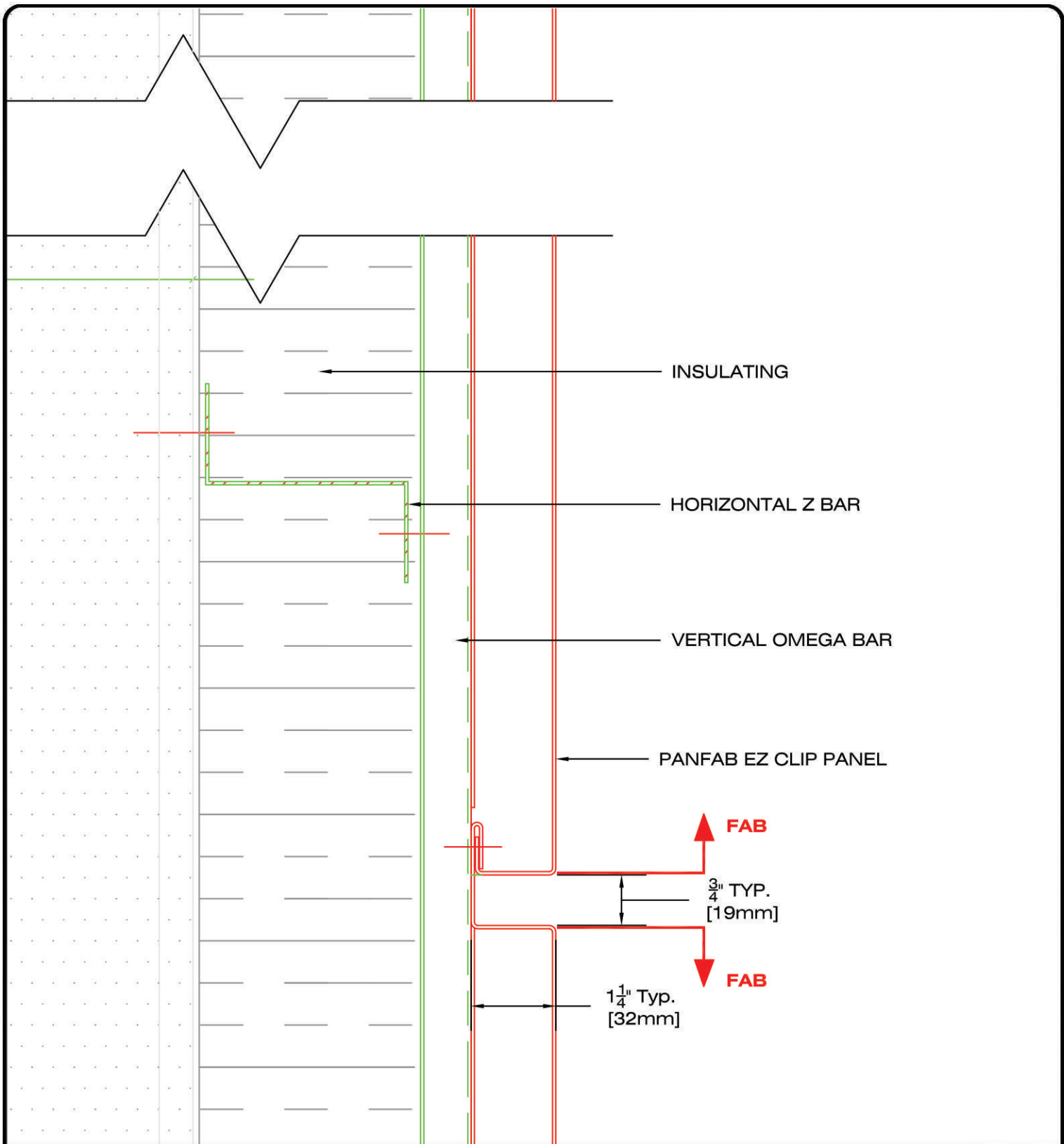
Project:		PZ-600 PANFAB EZ CLIP PANEL
Title:		CUT VIEW
Scale:	1:5	Page: 630210
Date:	MARCH 2017	



**PANFAB  
DESIGN USA**

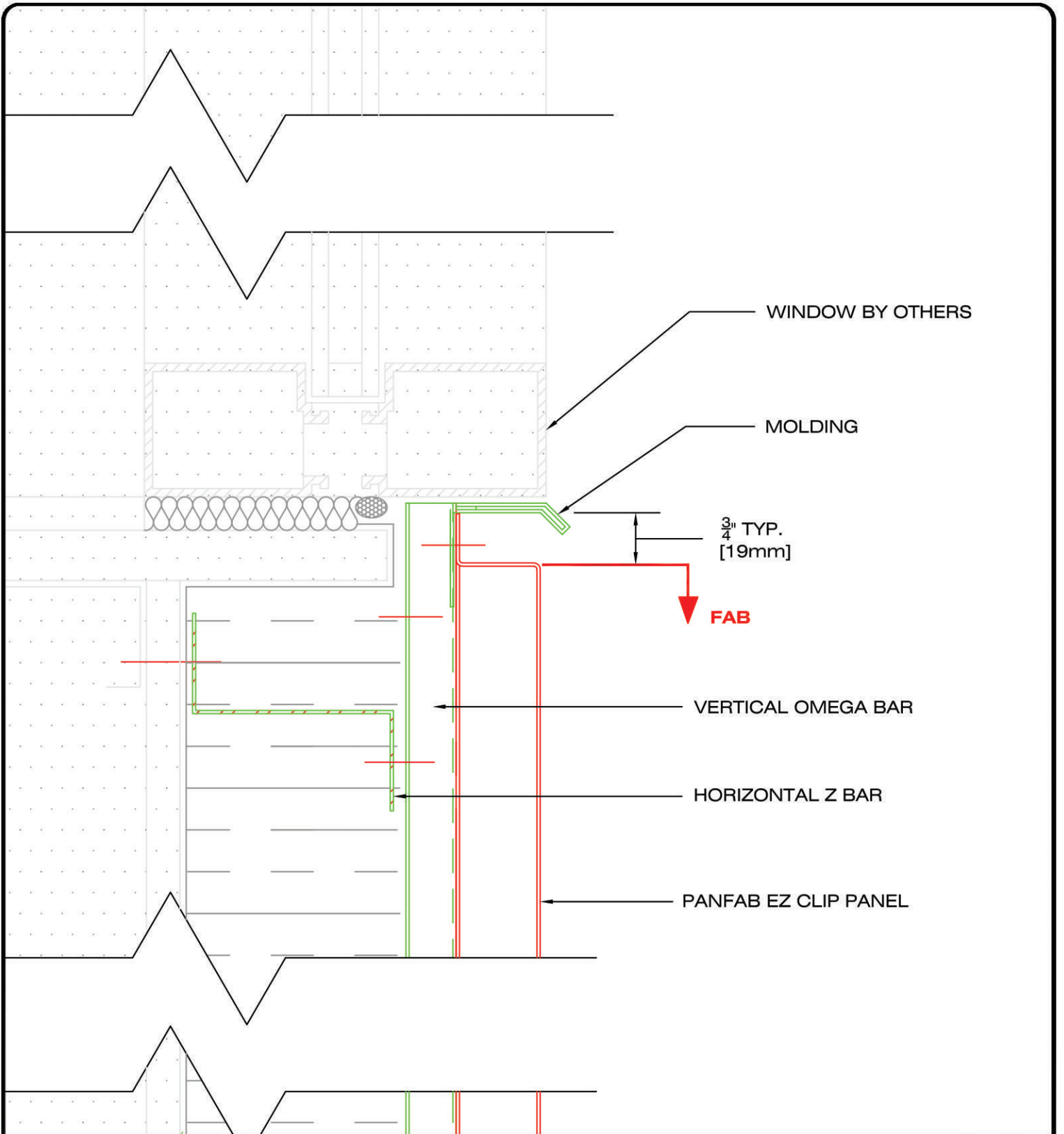
www.PanfabDesignUsa.com  
1-844-433-9446

<b>Project:</b>		PZ-600 PANFAB EZ CLIP PANEL
<b>Title:</b>		CUT VIEW
<b>Scale:</b>	1:2	<b>Page:</b> 630211
<b>Date:</b>	MARCH 2017	



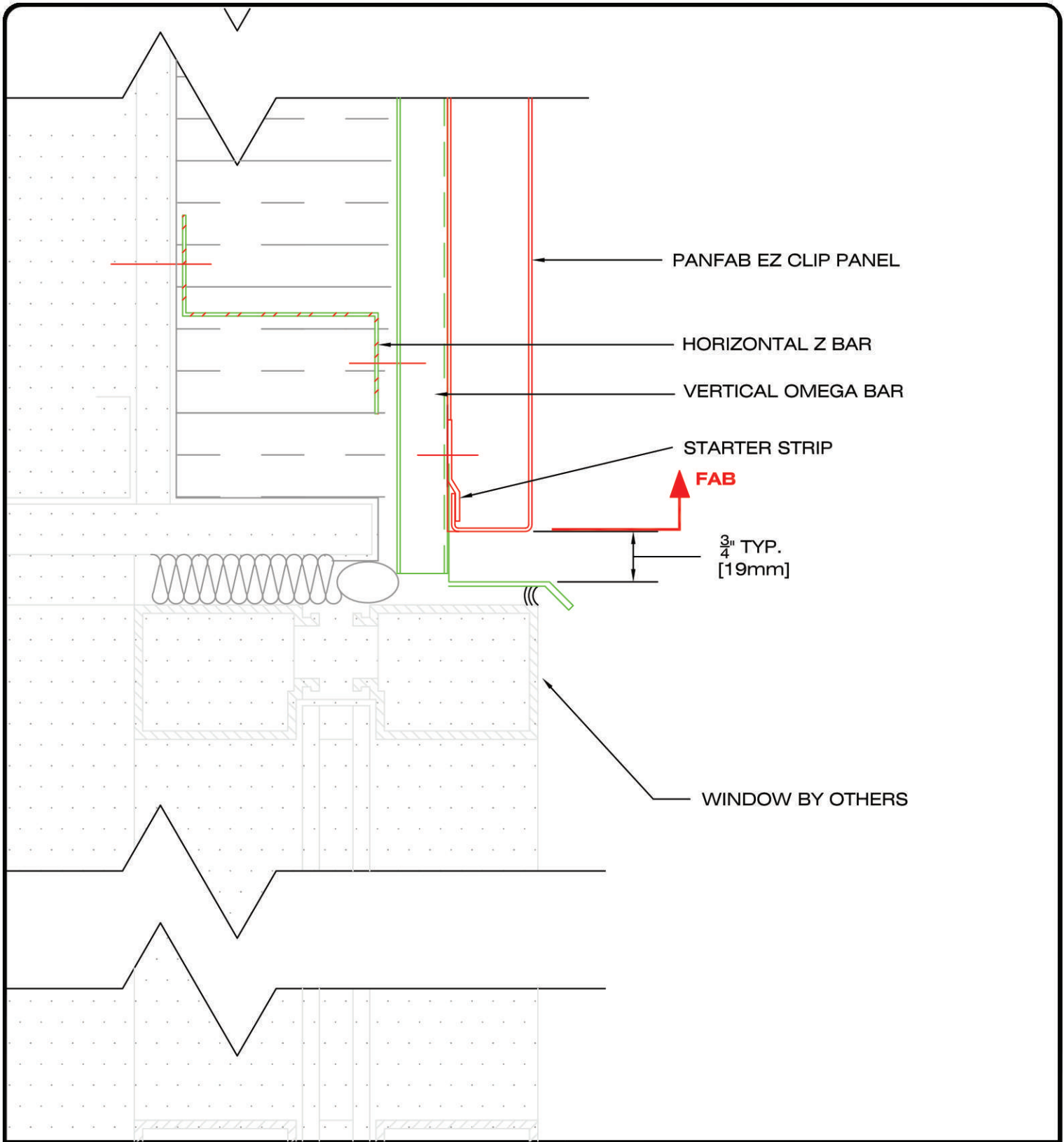
www.PanfabDesignUsa.com  
1-844-433-9446

Project:		PZ-600 PANFAB EZ CLIP PANEL
Title:		CUT VIEW
Scale:	1:2	Page: 630220
Date:	MARCH 2017	



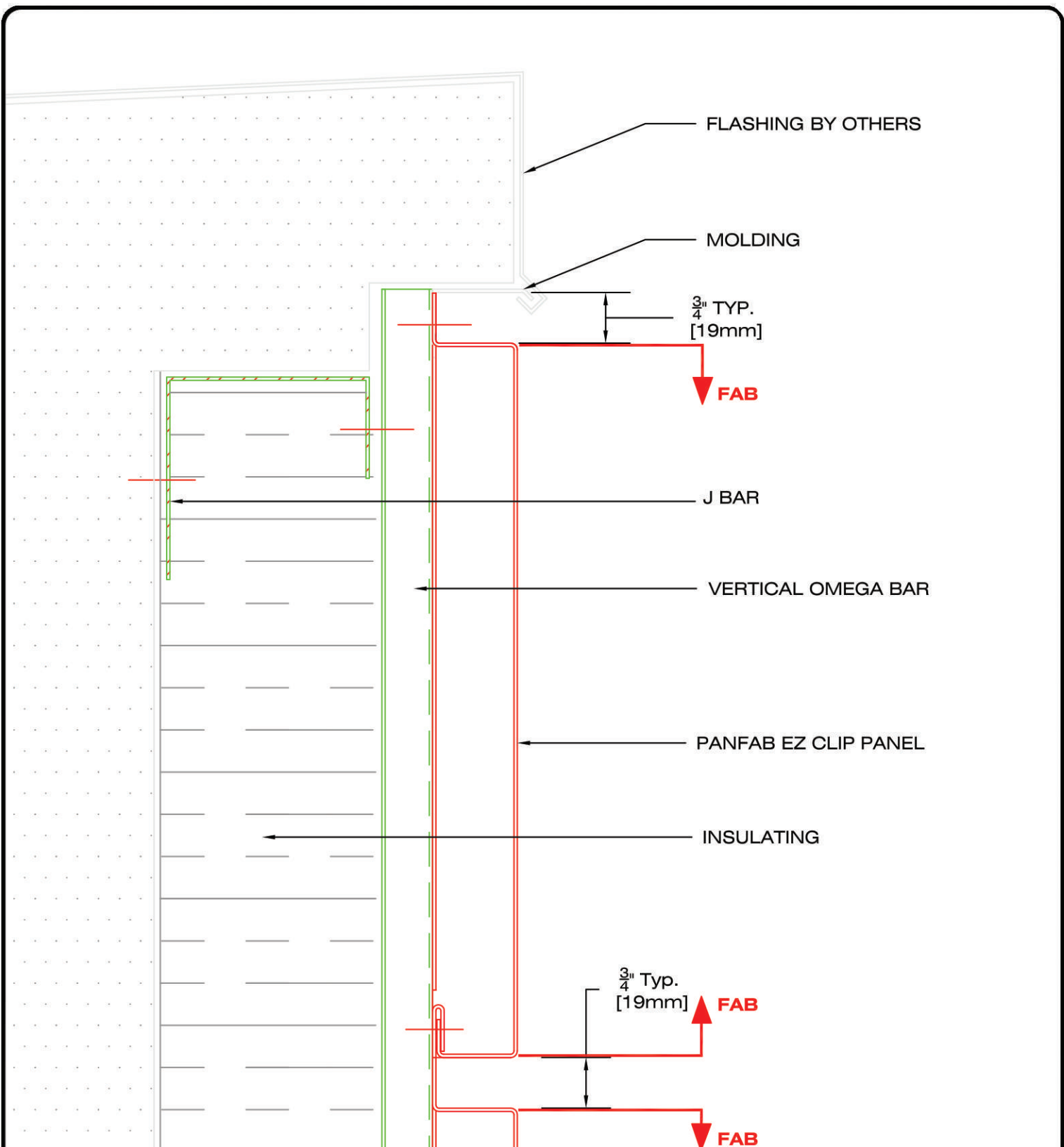
www.PanfabDesignUsa.com  
1-844-433-9446

Project:		PZ-600 PANFAB EZ CLIP PANEL
Title:		CUT VIEW
Scale:	1:2	Page: 630230
Date:	MARCH 2017	



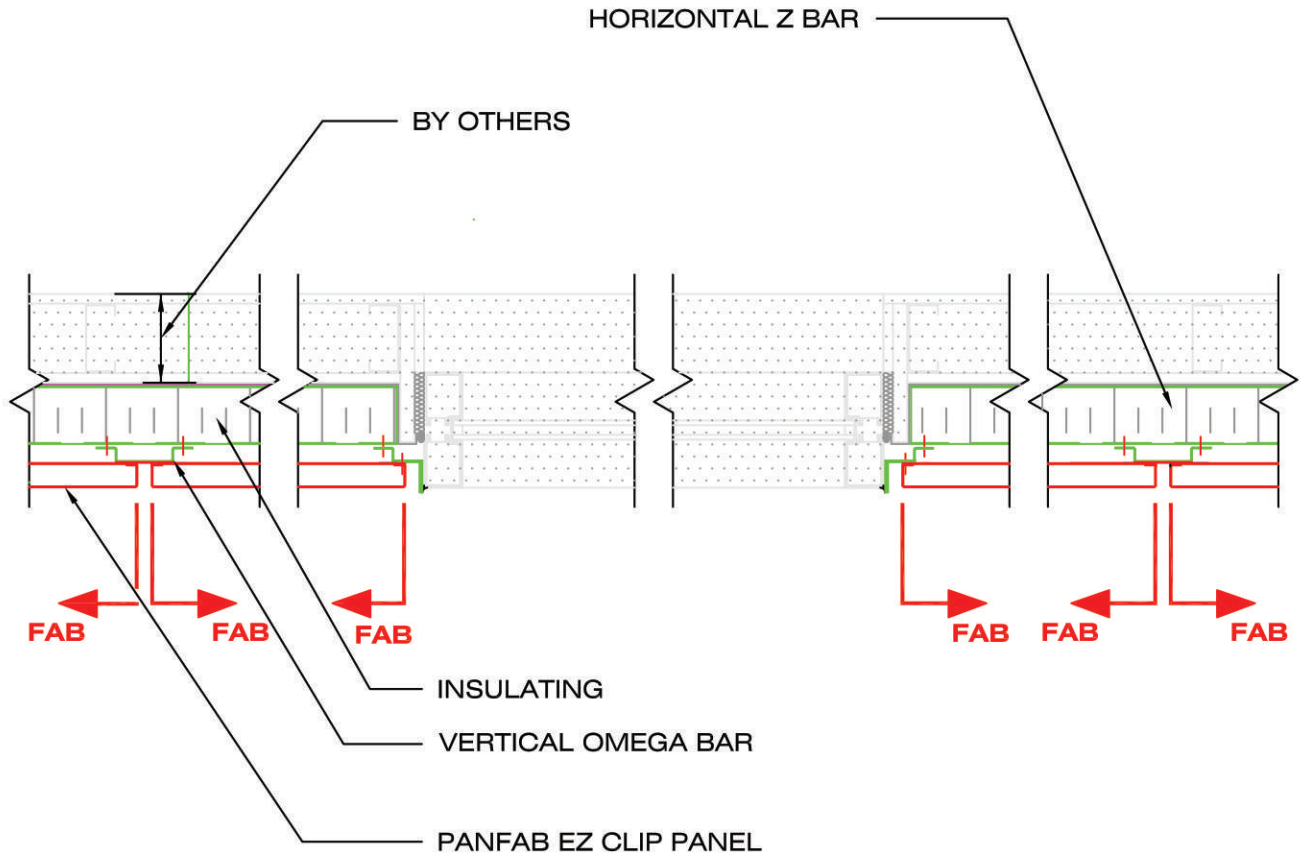
www.PanfabDesignUsa.com  
1-844-433-9446

Project:		PZ-600 PANFAB EZ CLIP PANEL	
Title:		CUT VIEW	
Scale:	1:2	Page:	630240
Date:	MARCH 2017		



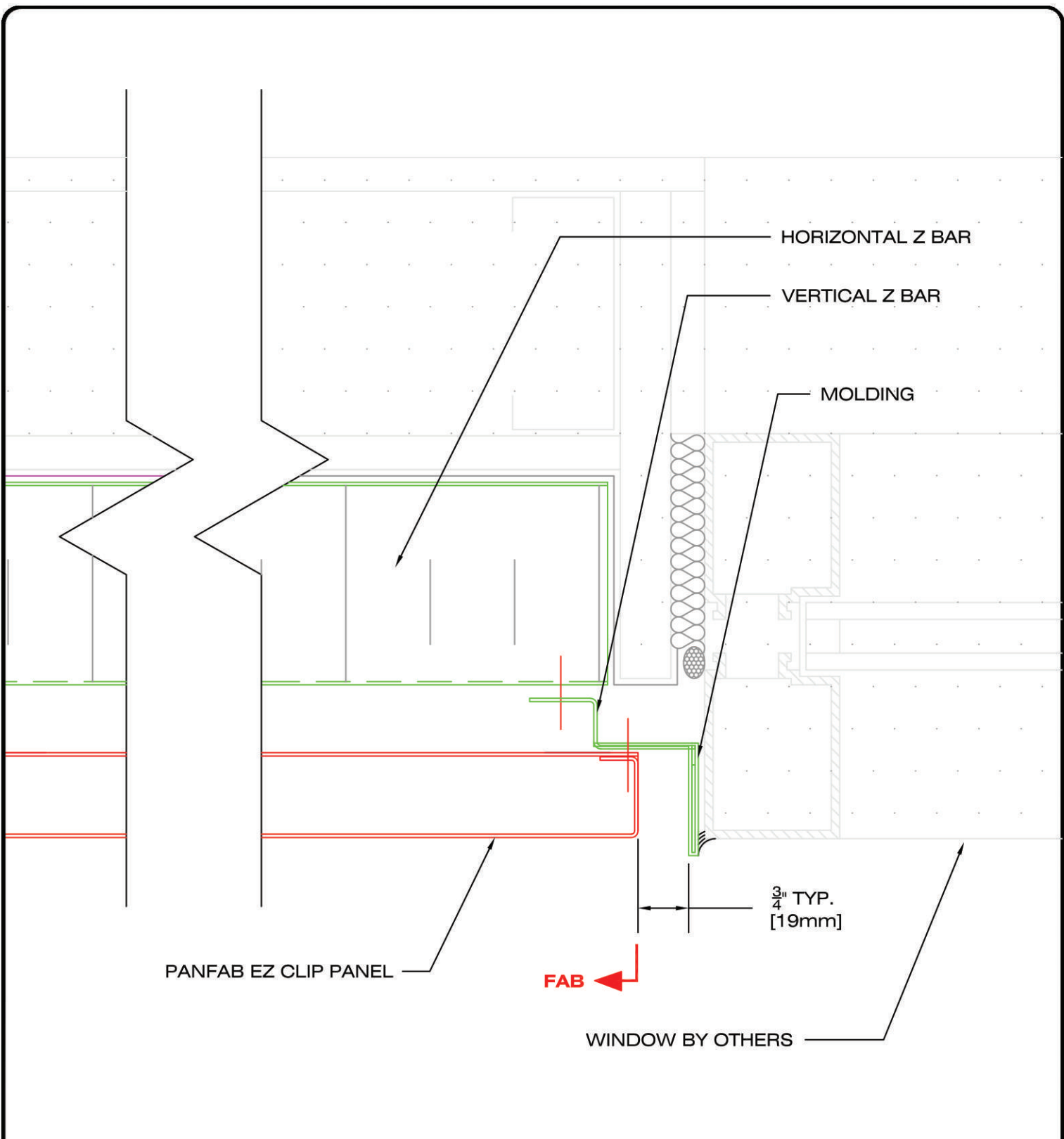
www.PanfabDesignUsa.com  
1-844-433-9446

Project:		PZ-600 PANFAB EZ CLIP PANEL
Title:		CUT VIEW
Scale:	1:2	Page: 630250
Date:	MARCH 2017	



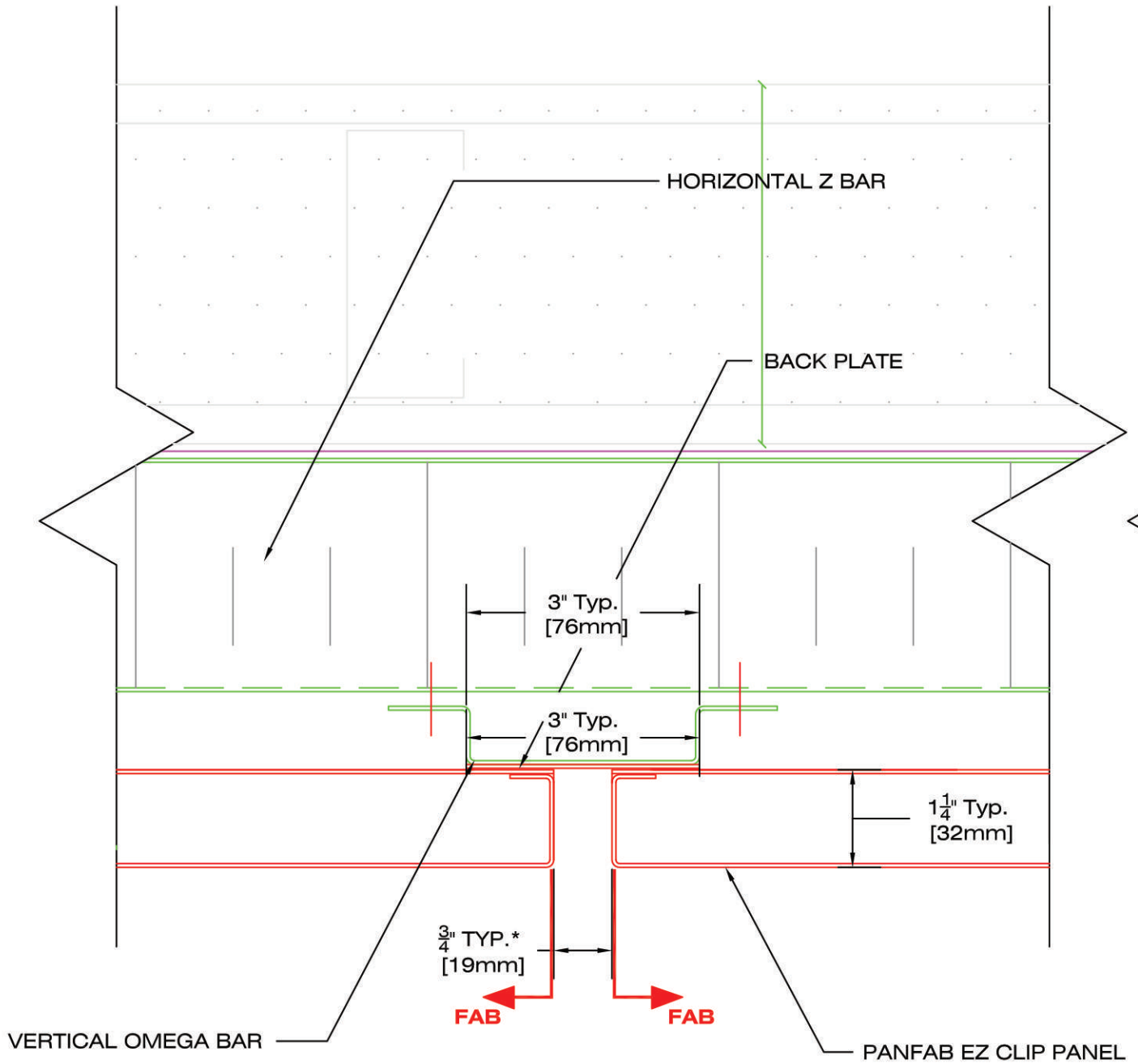
[www.PanfabDesignUsa.com](http://www.PanfabDesignUsa.com)  
 1-844-433-9446

Project:		PZ-600 PANFAB EZ CLIP PANEL
Title:		PLAN VIEW
Scale:	1:10	Page: 630300
Date:	MARCH 2017	



www.PanfabDesignUsa.com  
1-844-433-9446

Project:		PZ-600 PANFAB EZ CLIP PANEL
Title:		PLAN VIEW
Scale:	1:2	Page: 630310
Date:	MARCH 2017	



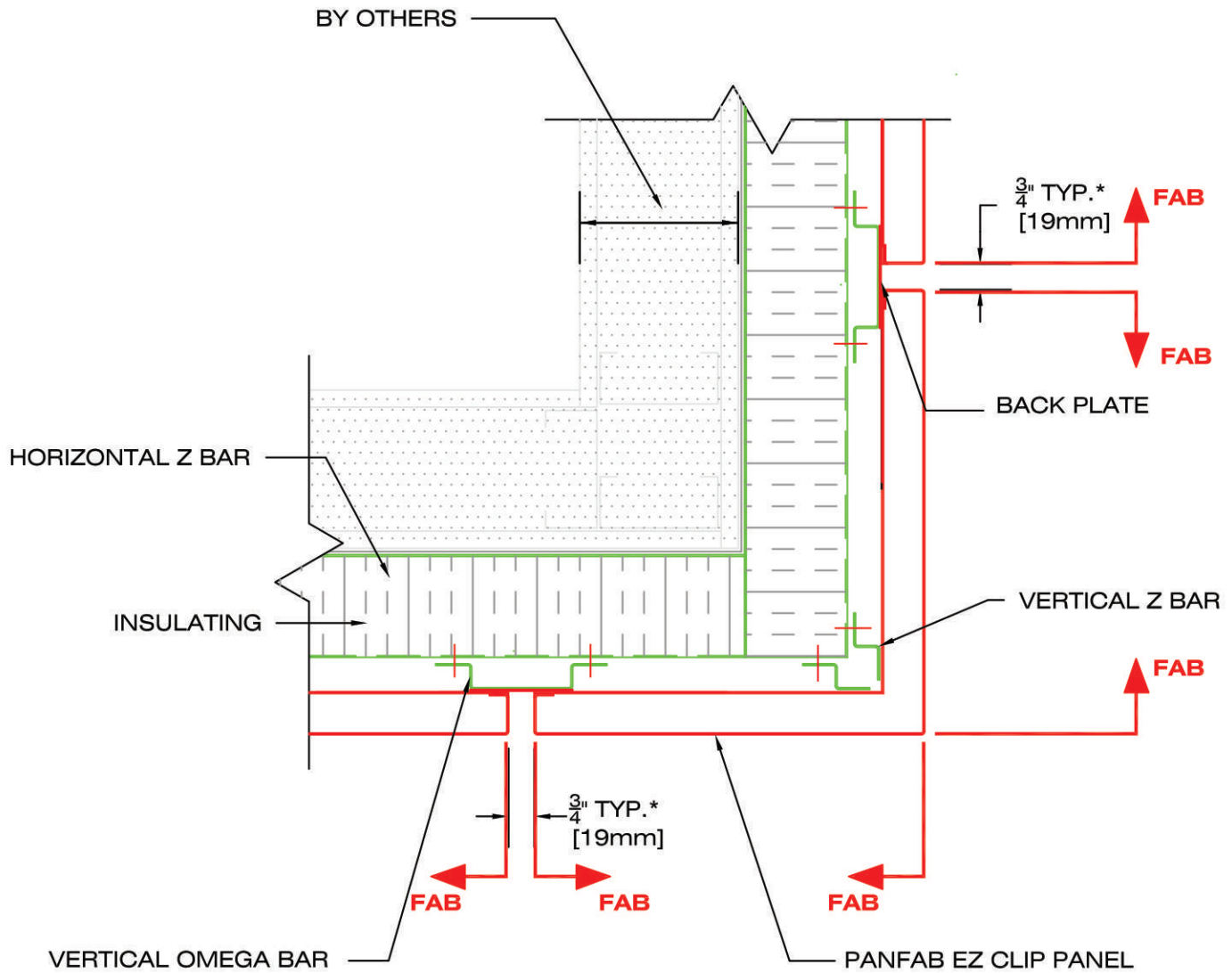
\* NOTE: THIS DIMENSION CAN VARY FROM 1/8" (3mm) TO 3" (76mm)



**PANFAB  
DESIGN USA**

www.PanfabDesignUsa.com  
1-844-433-9446

Project:		PZ-600 PANFAB EZ CLIP PANEL
Title:		PLAN VIEW
Scale:	1:2	Page: 630311
Date:	MARCH 2017	

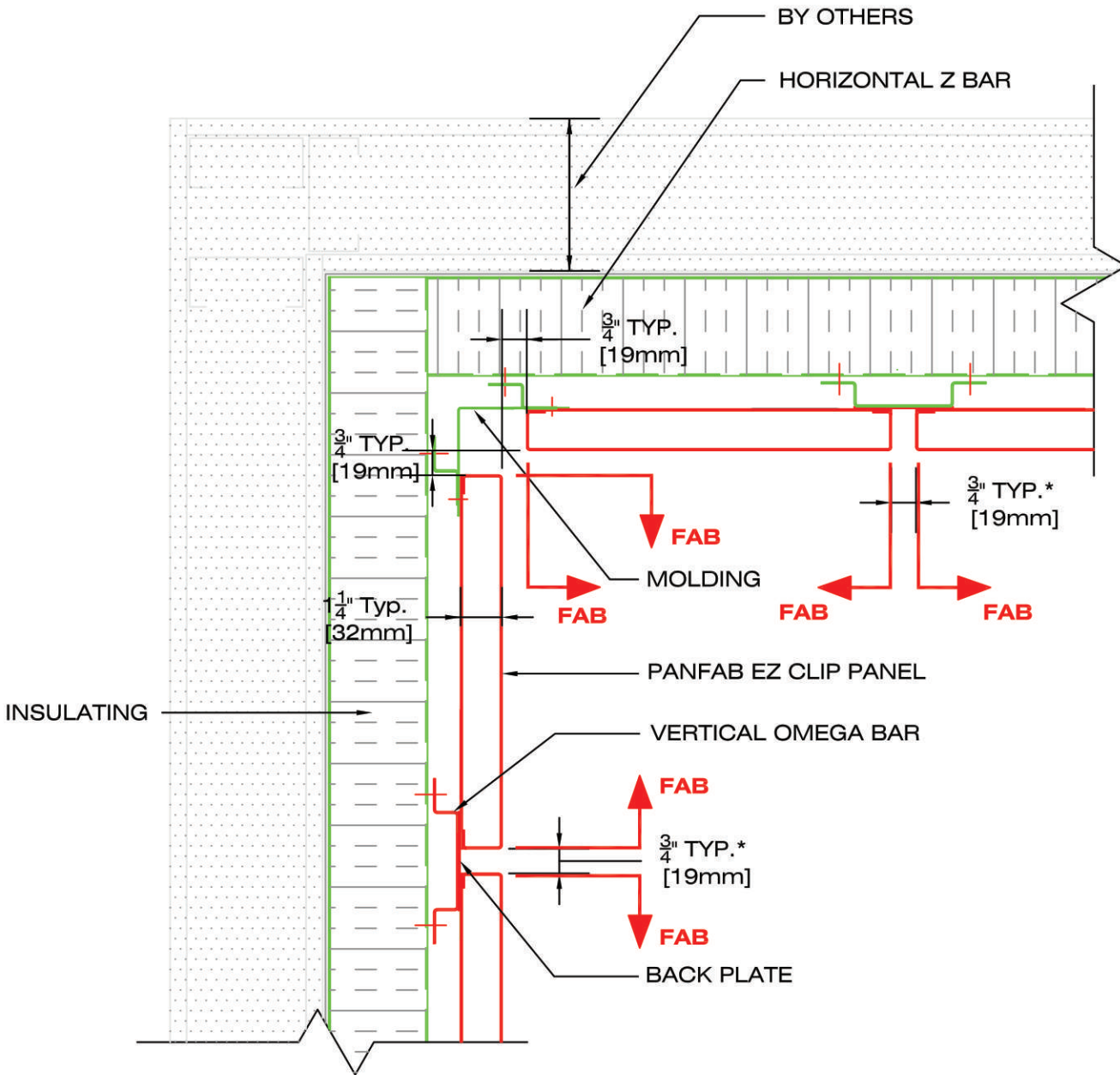


\* **NOTE:** THIS DIMENSION CAN VARY FROM  $\frac{1}{2}$ " (13mm) TO 3" (76mm)



www.PanfabDesignUsa.com  
1-844-433-9446

Project:		PZ-600 PANFAB EZ CLIP PANEL
Title:		PLAN VIEW
Scale:	1:5	Page: 630320
Date:	MARCH 2017	



\* **NOTE:** THIS DIMENSION CAN VARY FROM 1/2" (13mm) TO 3" (76mm)



www.PanfabDesignUsa.com  
1-844-433-9446

<b>Project:</b>		PZ-600 PANFAB EZ CLIP PANEL
<b>Title:</b>		PLAN VIEW
<b>Scale:</b>	1:5	<b>Page:</b> 630330
<b>Date:</b>	MARCH 2017	